

GE
Water & Process Technologies

Treat yourself a little more gently

Pro Elite™ Professional Series Water Treatment System



Untreated water is one tough problem.

There's only one way to say it: untreated water has no place in your lifestyle. But you can eliminate it from your home – and your life – with one of the most sophisticated water treatment systems available today.

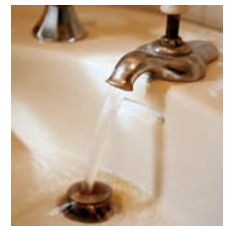
The Pro Elite™ Professional Series water treatment system from GE.



Tough on your home.

From clogged pipes to stained sinks to cloudy glassware, untreated water leaves its mark all over your house, resulting in a whole host of problems, including:

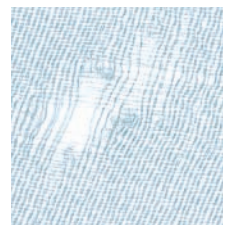
- Clogged water pipes
- Unsightly stains on sinks, tubs and tiles
- Cloudy, spotted glassware
- Reduced effectiveness of cleaning products
- More time spent scrubbing tile, sinks and more



Tough on you.

Untreated water can affect you personally – in your shower, in your kitchen and elsewhere in your house. From fabrics to bath soaps and shampoos, this water can leave you with:

- Scratchy, itchy towels
- Premature fabric failure
- Soaps that don't lather as well, leaving a residue on skin and hair
- Up to 50%* more money spent on soaps, shampoos, detergents and other cleaning products



*Source: WQA

Improvement you can feel for yourself

Once you have treated your water, you can feel the difference immediately. Your skin and hair will feel cleaner, fresher and softer after showering. Your towels and other fabrics will regain their natural softness, fluffiness and comfort. Sheets and bedding will feel cleaner and be fresher smelling. Your glassware and dishes will sparkle once again, and unsightly spots will be eliminated. And those ugly stains in your sink and in other areas of your bathroom will be gone for good.

- Cut spending on detergents and other cleaning supplies – by up to 50%
- Showering gives you a fresh, clean feel
- Machine washables will rinse cleaner, feel softer and retain color longer
- Dishes can be rinsed without costly drying agents

So when it comes to improving your lifestyle, saving money on cleaning products and feeling better in your own home, the choice shouldn't be hard at all.



The Pro Elite™ Professional Series. Solve your water problems. Simply.

Quality water from a trusted name

GE, the innovator in water processing technology, has crafted the Pro Elite™ Professional Series Systems to the highest standards. Your investment will reward you with quality water throughout your home. Quality. It's what GE is all about.



PRO ELITE WATER TREATMENT SYSTEM

- **NEVER FORGETS**
Memory back-up retains settings during power outages.
- **SMART THINKING**
Full-digital electronic controller commands system through all stages of operation and adjusts according to your water usage.
- **FIRST ALERT**
18 karat gold-tipped conductivity cells instantly alert the system controller to any change in water quality.
- **EFFICIENCY EXPERT**
Only regenerates when needed – saves time, energy and money.
- **ONLY THE FINEST**
Components constructed of the very best materials to withstand corrosion and wear.
- **POWERFUL STREAM**
Large-diameter riser tube ensures maximum water pressure throughout your home.
- **EASY ON THE EYES**
Sleek, contemporary styling mirrors today's trends in appliance design.



PRO ELITE REVERSE OSMOSIS SYSTEM – UNDERSINK

- **BETTER BEVERAGES**
Improved flavor and clarity in coffee, juice and tea.
- **A CLEAR DIFFERENCE**
Ice cubes will be clearer and harder.
- **QUALITY ON TAP**
Eliminate the hassle and expense of bottled water – every glass of water tastes great!
- **EAT HEALTHY**
Fruits and vegetables retain more nutrients when cooked in RO water.
- **MAINTENANCE MADE EASY**
Only requires simple filter cartridge replacement – nothing to scrub or clean.
- **A GREAT FIT**
Compact design makes it an easy fit under your kitchen sink.
- **STAY DRY**
Innovative manifold design eliminates tubing between filtration stages, which can be a source of leaks.
- **FILTRATION TIMES FOUR**
Four-stage filtration process removes impurities, lead, sodium, chlorine and other chemicals.
- **A STEADY STREAM**
Attractive sink-mount faucet connects to a large-capacity (3.2 gallon) storage tank.

Only available through authorized GE Pro Elite™ Dealers

www.geproelite.com



Platinum Dealer
GE
Water & Process Technologies



Member
©2008, General Electric Company.
Printed in USA, P/N 3022308 Rev. B